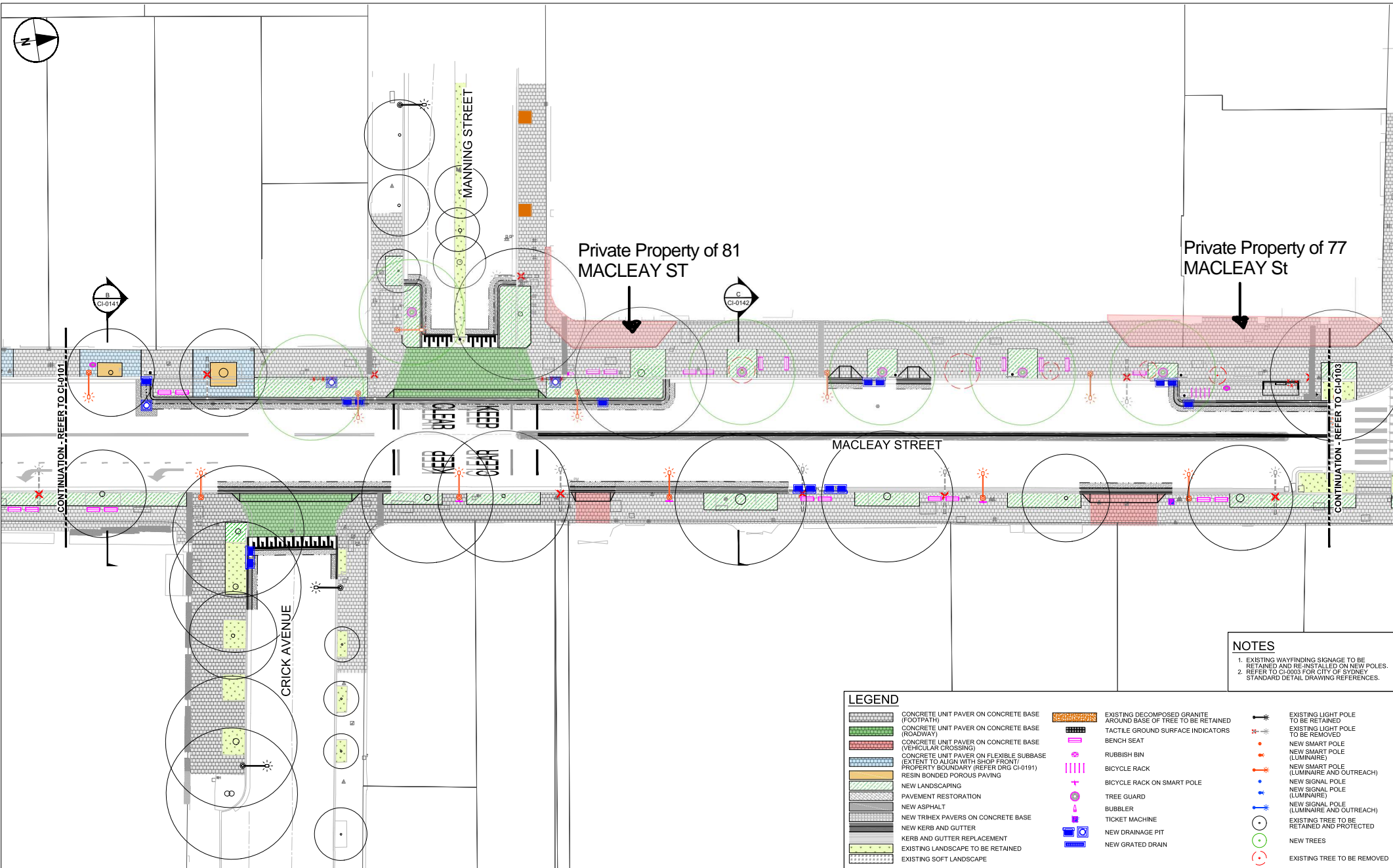


# **Attachment A**

**Macleay Street Private Property Mark Up**



- NOTES**
- EXISTING WAYFINDING SIGNAGE TO BE RETAINED AND RE-INSTALLED ON NEW POLES.
  - REFER TO CHANGES FOR CITY OF SYDNEY STANDARD DETAIL DRAWING REFERENCES.

**LEGEND**

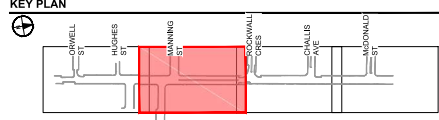
	CONCRETE UNIT PAVER ON CONCRETE BASE (FOOTPATH)		EXISTING DECOMPOSED GRANITE AROUND BASE OF TREE TO BE RETAINED		EXISTING LIGHT POLE TO BE RETAINED
	CONCRETE UNIT PAVER ON CONCRETE BASE (ROADWAY)		TACTILE GROUND SURFACE INDICATORS		EXISTING LIGHT POLE TO BE REMOVED
	CONCRETE UNIT PAVER ON CONCRETE BASE (VEHICULAR CROSSING)		BENCH SEAT		NEW SMART POLE (LUMINAIRE)
	CONCRETE UNIT PAVER ON FLEXIBLE SUBBASE (EXTENT TO ALIGN WITH SHOP FRONT/ PROPERTY BOUNDARY (REFER DRG CI-0191))		RUBBISH BIN		NEW SMART POLE (LUMINAIRE AND OUTREACH)
	NEW LANDSCAPING		BICYCLE RACK		NEW SMART POLE (LUMINAIRE AND OUTREACH)
	NEW ASPHALT		BICYCLE RACK ON SMART POLE		NEW SIGNAL POLE (LUMINAIRE)
	NEW TRIHEX PAVERS ON CONCRETE BASE		TREE GUARD		NEW SIGNAL POLE (LUMINAIRE)
	NEW KERB AND GUTTER		BUBBLER		NEW SIGNAL POLE (LUMINAIRE AND OUTREACH)
	KERB AND GUTTER REPLACEMENT		TICKET MACHINE		EXISTING TREE TO BE RETAINED AND PROTECTED
	EXISTING LANDSCAPE TO BE RETAINED		NEW DRAINAGE PIT		NEW TREES
	EXISTING SOFT LANDSCAPE		NEW GRATED DRAIN		EXISTING TREE TO BE REMOVED

This drawing is confidential and shall only be used for the purpose of this project. The signing of this title block confirms the design and drafting of this project have been prepared and checked in accordance with the AECOM quality assurance system to ISO 9001-2000.

**AECOM**  
CONSULTANT  
AECOM Australia Pty Ltd  
A,B,N 20 093 846 925  
www.aecom.com

**PROJECT**  
Macleay Street Upgrade  
Potts Point

**CLIENT**  
CITY OF SYDNEY  
SYDNEY CIVIL



**PROJECT MANAGEMENT INITIALS**

AL	EC	ON
DESIGNER	CHECKED	APPROVED

**ISSUE/REVISION**

NO	DATE	DESCRIPTION
05	22.01.2021	100% IFC ISSUE
04	27.10.2020	100% IFC ISSUE
03	16.10.2020	100% IFC ISSUE
02	31.07.2020	DRAFT IFC
01	24.07.2020	ISSUE FOR CONSTRUCTION
IR		DATE DESCRIPTION

**PROJECT NUMBER**  
60616465  
**SHEET TITLE**  
GENERAL ARRANGEMENT  
PLAN  
SHEET 02  
**SHEET NUMBER**  
60616465-001-SHT-1000-CI-0102

**FOR CONSTRUCTION**